



# 2ml Variable Auto Injector WITH BOTTLE ATTACHMENT

njphillips.com

The NJ Phillips 2ml Automatic Injector is a precision instrument, with a high quality finish, designed for mass treatment of livestock and poultry with a variety of vaccines and injectable solutions. Given normal care it will last indefinitely. No responsibility will be accepted by the manufacturer should this instrument be used for any purpose than that intended.

**Some of its more outstanding features are detailed below.**

## *POSITIVE NEEDLE LOCK*

The novel easy-off fitting enables the Luer needles to be easily removed. To attach the needle, simply unscrew the locking nut until the needle hub can be fitted to the tapered mount, then retighten to secure the needle.

## *DOSE ADJUSTMENT*

An extremely positive locking mechanism enables doses to be set and locked in position with ease. The cylinder is clearly graduated from 0.5ml to 2ml in increments of 0.5ml.

## *VALVE SYSTEM*

Valve components are proven designs that are trouble free and are easily accessible for cleaning.

## *EASE OF STERILIZATION*

There is no need to dismantle this instrument when sterilizing. Simply immerse the hand piece in boiling water (see instructions for use) or fill with a suitable chemical sterilant.

## *VISIBILITY OF DOSE*

The unique stepped cylinder design provides full dose visibility while at the same time allowing a comfortable length of stroke without sacrificing accuracy.

## *ROBUST CONSTRUCTION*

Our research and development team have skilfully combined a quality appearance with durability while keeping weight to a minimum.

## **INSTRUCTIONS FOR USE**

1. It is essential that this instrument and a supply of needles be thoroughly sterilized before each use. A common method of sterilization is as follows:
  - a. Draw hot water into the cylinder.
  - b. Suspend complete instrument in a container of water and boil together with the needles for 10 to 20 minutes.
  - c. Remove instrument from container, wrap cloth around the handle and pump dry.



**NOTE**

Suspending the instrument not only makes it easier to remove but also prevents damage should the container boil dry. Repeated boiling will eventually cause the transparent connecting hose to turn cloudy. This is not harmful. Chemical sterilization with antiseptic solutions is sometimes practised and in such instances the recommendations of the chemical manufacturer should be followed. Do not attempt to sterilize by autoclaving.

2. To connect a bottle or flexible pack proceed as follows: Unscrew locking ring and remove needle protector making certain the rubber seal washer is not dislodged. Insert neck of pack into locking ring and seat firmly in position. Take vaccinator in other hand and insert needle into centre of bottle seal. Ensure locking ring is engaged correctly in bottle locking seat (i.e.: not cross-threaded) and screw locking ring down firmly.

To assist penetration of draw-off needle pierce centre of rubber stopper with a sterile hypodermic needle of similar gauge.
3. Set the required dose by aligning the head of the piston with the appropriate cylinder calibration, prime the instrument to remove air from the system.
4. Test for accuracy by expressing into a properly calibrated measuring glass.



Care must be taken to ensure the liquid does NOT come into contact with any part of the operators body. Chemicals may cause injury to the operator.

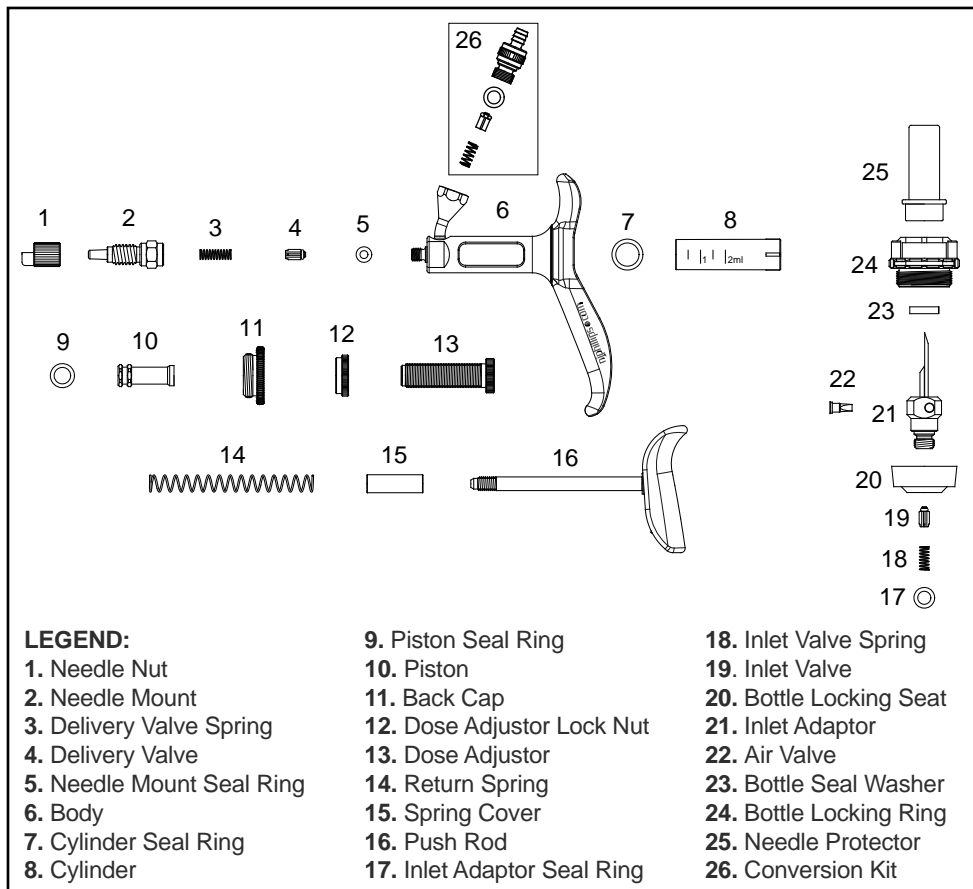
## **CARE AND MAINTENANCE**

### **Before Use**

As lubricants may evaporate during storage it is advisable to apply NJ Phillips Lubricant to the piston. Unscrew the dose adjustor fully to reveal access to the rear of the piston. This procedure should be followed after sterilization.

### **After Use / When Changing Products**

1. Flush the instrument and connecting tube thoroughly with warm water and detergent mix.
2. Re-flush with clean water.
3. Lubricate the instrument by disconnecting the feed tube and drawing a small quantity of NJ Phillips Lubricant through the inlet fitting.
4. Occasionally check the piston seal ring for wear by removing the piston and push rod assembly. Take care not to damage the "O" ring groove when replacing the piston seal ring.



**LEGEND:**

- |                           |                             |                         |
|---------------------------|-----------------------------|-------------------------|
| 1. Needle Nut             | 9. Piston Seal Ring         | 18. Inlet Valve Spring  |
| 2. Needle Mount           | 10. Piston                  | 19. Inlet Valve         |
| 3. Delivery Valve Spring  | 11. Back Cap                | 20. Bottle Locking Seat |
| 4. Delivery Valve         | 12. Dose Adjustor Lock Nut  | 21. Inlet Adaptor       |
| 5. Needle Mount Seal Ring | 13. Dose Adjustor           | 22. Air Valve           |
| 6. Body                   | 14. Return Spring           | 23. Bottle Seal Washer  |
| 7. Cylinder Seal Ring     | 15. Spring Cover            | 24. Bottle Locking Ring |
| 8. Cylinder               | 16. Push Rod                | 25. Needle Protector    |
|                           | 17. Inlet Adaptor Seal Ring | 26. Conversion Kit      |

**PLEASE ORDER BY KIT AND PART NAME**

**SPARE PARTS AVAILABLE:**

<u>KIT No.</u>	<u>PART NAME</u>	<u>INCLUDES ILLUSTRATION No.</u>
WX750	Major Service Kit	3,4,5,7,8,9,13,14,17,18,19.
WX1062	Minor Service Kit	3,4,5,7,9,13,14,17,18,19.
WX1402	Conversion Kit	26 (illustrated but not supplied).

AS OUR POLICY IS ONE OF CONTINUOUS IMPROVEMENT THE MANUFACTURER RESERVES THE RIGHT TO ALTER THESE SPECIFICATIONS AT ANY TIME. ALL PRODUCTS PRODUCED BY NJ PHILLIPS PTY LIMITED, ARE IDENTIFIED BY A UNIQUE BATCH NUMBER. THIS IDENTIFICATION NUMBER IS AFFIXED TO THE PRODUCT TO ALLOW TRACEABILITY BY THE MANUFACTURER AND MUST NOT BE REMOVED IF PRODUCT INTEGRITY IS TO BE MAINTAINED.



**NJ PHILLIPS Pty Limited** ABN 36 000 082 002

POSTAL ADDRESS: LOCKED BAG 8 GOSFORD NSW 2250 AUSTRALIA  
 TELEPHONE: +61 2 4340 2044 FAX: +61 2 4340 1991  
 EMAIL: [njp1@njphillips.com.au](mailto:njp1@njphillips.com.au)

[njphillips.com](http://njphillips.com)



PAS687 | QL753-R1